

## What to expect from Information and Marketing

### *The Information and Marketing Division*

*provides information for  
individuals, companies  
and investors interested  
in exploration and mining  
in Papua New Guinea.*

*Information available  
include all geo-science  
data, information, explora-  
tion and mining license  
areas in PNG.*



**Ore in Context**



**Mining Haus, Poreporena Highway  
P.O. Box 1906  
Port Moresby 121, NCD  
Papua New Guinea**

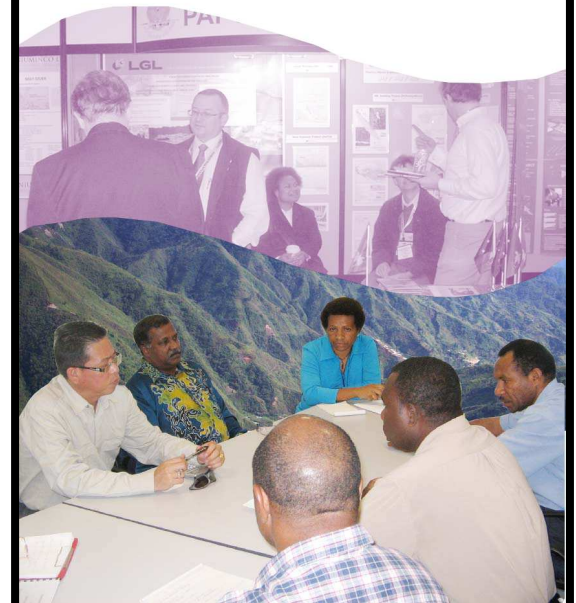
### **INFORMATION AND MARKETING DIVISION**

Tel: +(675) 321 3511  
Fax: +(675) 320 0579  
Email: [info@mra.gov.pg](mailto:info@mra.gov.pg)  
Website: [www.mra.gov.pg](http://www.mra.gov.pg)



## **Information and Marketing Division**

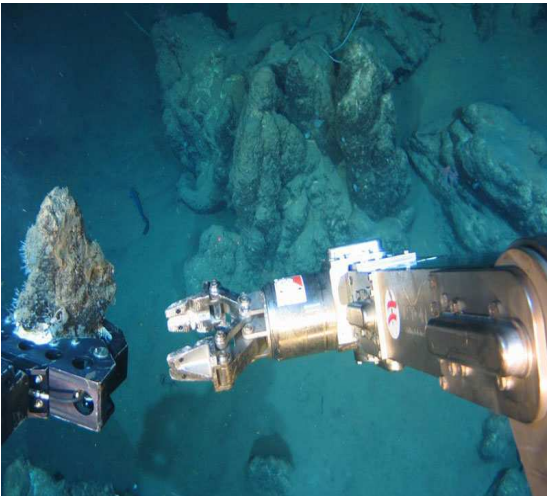
***....the first stop***



***Minerals for Life***

## Information and Marketing

The Information & Marketing division of the MRA is the first stop for mineral prospecting investment companies.



**Deep sea mining, a first for PNG by Nautilus Mining, also possibly the world.**

The flag carrier of Papua New Guinea's Mineral Resources Authority is the Information and Marketing Division as it collects information from the various divisions, processes it to marketable package, and hoists it for public, investors, exploration and mining companies to access.

The Information and Marketing Division of the Mineral Resources Authority's challenge is to continue to process and disseminate geological, mineral prospectivity and related

information for clients.

Its key objective is to:

- Focus on attracting new mineral sector investment to PNG by establishing a marketing function incorporating all the functions required to promote prospectivity, deliver products and services to potential investors, and to effectively deal with public relations issues.

The division currently comprises the Geological Information System (GIS) section which compiles spatial data and information, and Marketing & Public Relations, which markets and promotes information processed by GIS specialists or acquired from other MRA divisions.

The division is also responsible for the administration and management of the Database and website.

Information processed and available from the division include:

- Vital geo-scientific data and information such as geological, geochemistry, aeromagnetic data and various spatial data or information.



**Information and Marketing officers attending to Korean clients interested in investing in PNG's mining sector.**

These metadata from the datasets are significant, as they may indicate general mineralization processes in the surveyed areas.

- End remote sensing data, i.e. satellite imagery and bathymetry data. This data is used for a range of things from mapping to identification of geographical and other land mark features.
- Exploration reports and other information relating to mining and exploration of PNG's mineral resources
- The division is continuing to build its database for release to clients, potential investors and the public.



**The IMD Team**

**(Back L to R) Arnold Lakamanga Manager: GIS Information, Kenneth Avira, (Center) Messery Gubag, Patricia Sonny, Sonnick Taguse, (Front) Maxine Lahan, Doreen Kava.**